



Accuracy of Geometric Geoid Model of Singapore using RTK Heighting

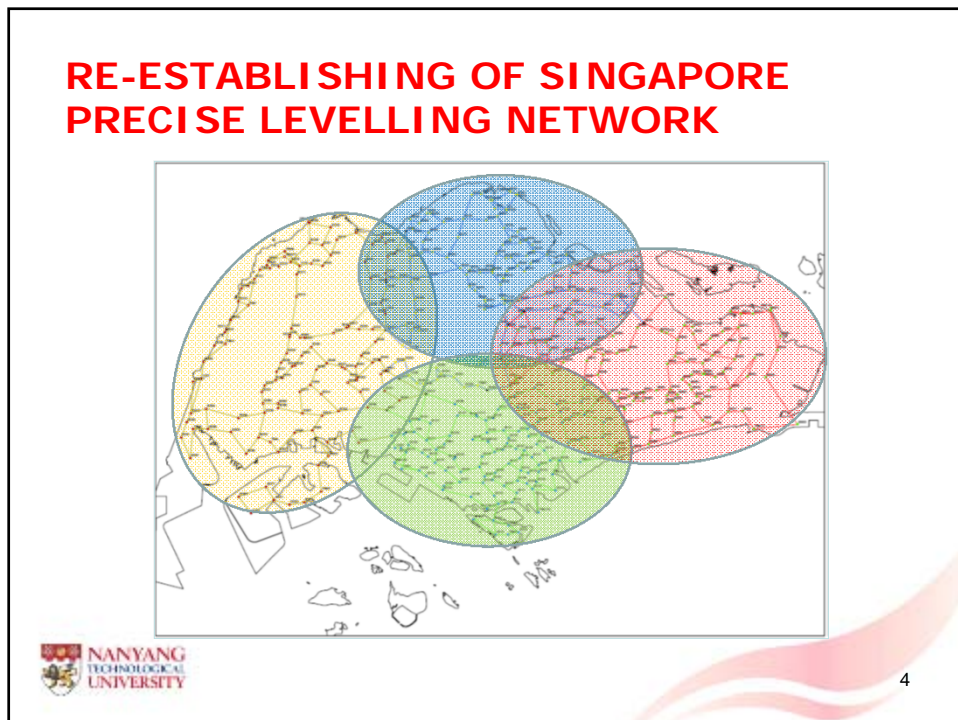
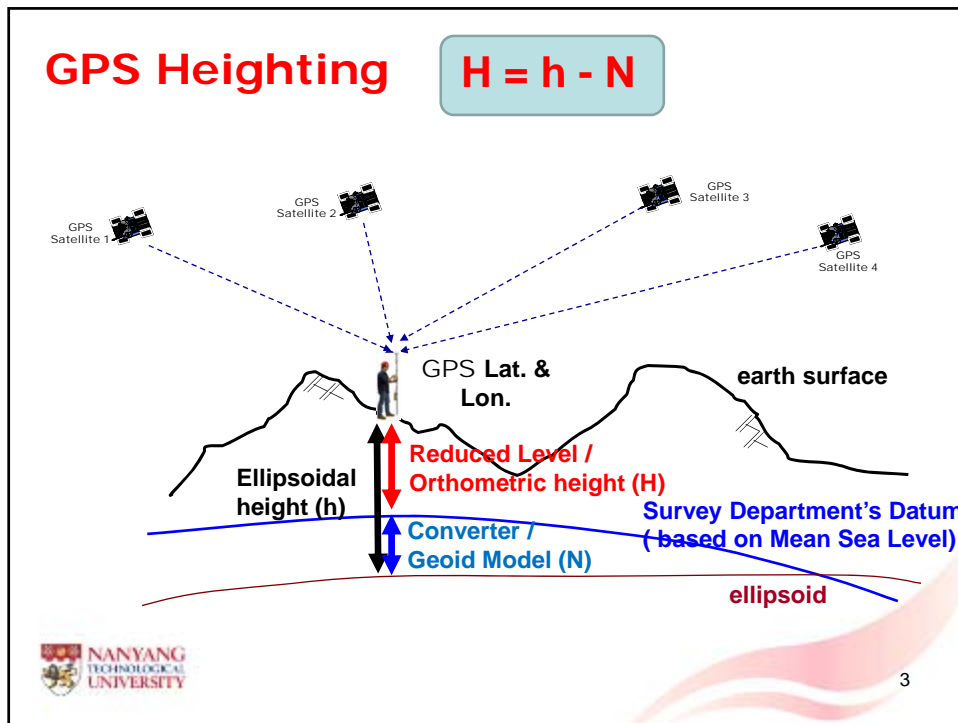
TOR, Yam Khoon
Assoc. Professor
School of Civil & Environmental Engineering, NTU, Singapore

FS 1C – Geoid and Gravity – Modelling, Measurements and Applications
FIG Congress 2010
Facing the Challenges – Building the Capacity
Sydney, Australia, 11-16 April 2010

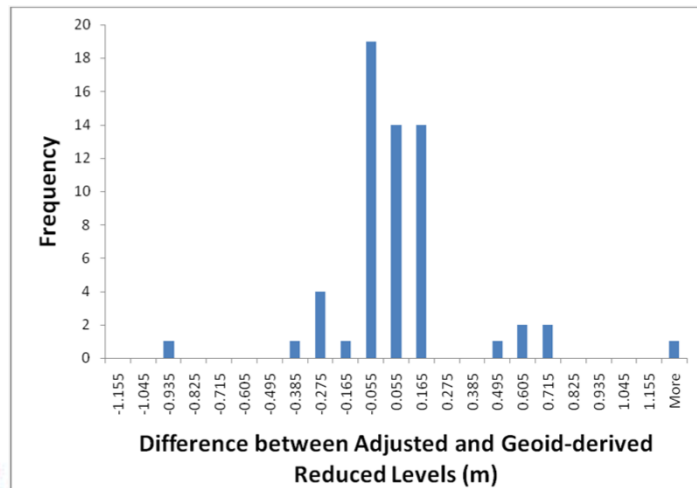
1



2



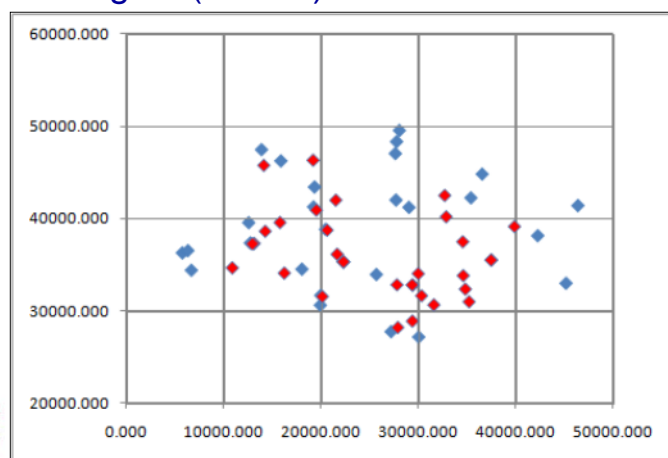
464 PLBMs used in geoid computation but
58 of the PLBMs with RTK ellipsoidal heights
 are not able to fit in!



5

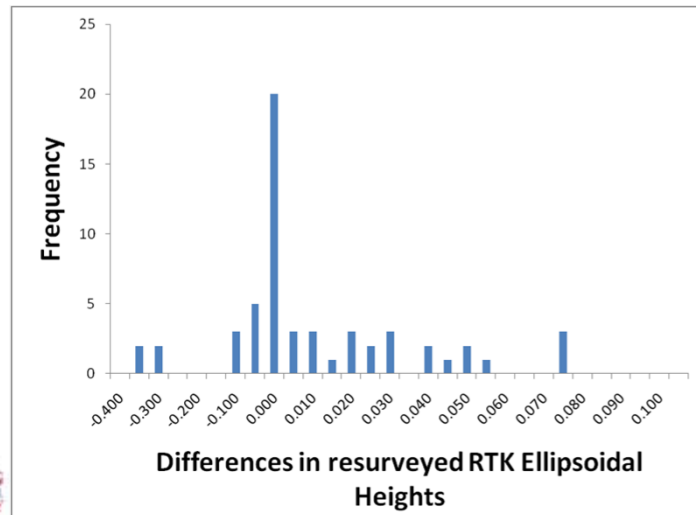
Spatial distribution of 2 sets of Check BMs:

1. The resurveyed 58 problematic benchmarks with revised RTK procedure (in red)
2. 26 BMs with post-processed and 6 BMs with RTK ellipsoidal heights (in blue)



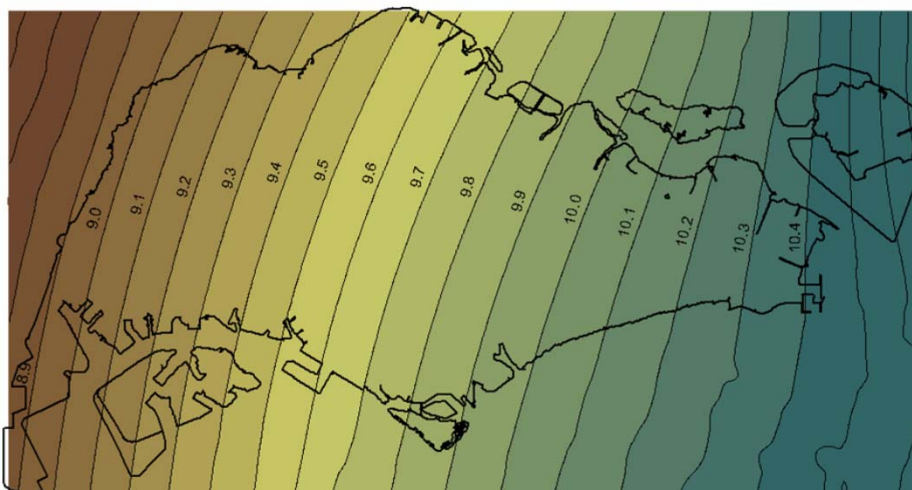
6

Results of the Resurveyed 58 problematic benchmarks



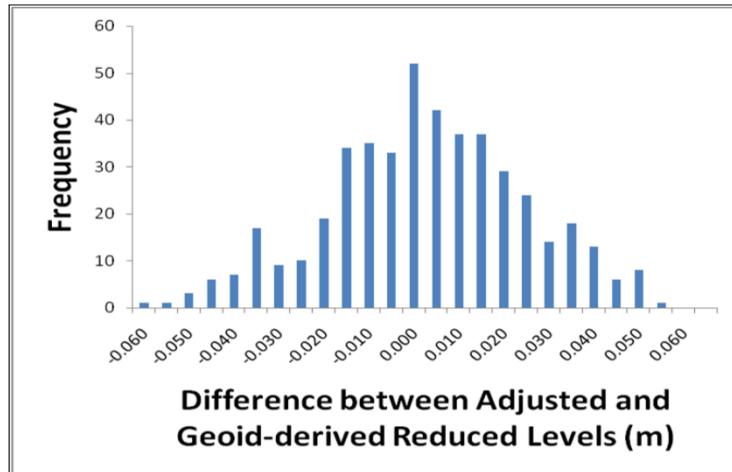
7

SGeoid09 - "Geoid Model" or Converter for Singapore



8

Verification of SGeoid09



Using multiple regression forward stepwise method, RTK heighting and the precise levelling, it is able to achieve accuracy to within ± 0.030 m, ± 0.040 m and ± 0.050 m for 82%, 95% and 99%, respectively, of the sampled data.



9



Services | Technology Focus | SGEoid09 | Downloads | FAQ | Highlights | Useful Links | SiReNT Status | Terms & Con

SGeoid09

This function allows you to perform conversion of Ellipsoidal height to reduced level height for Survey Department's datum.

Step 1 of 2

To specify SVY21 Coordinates and WGS84 Ellipsoidal height

Northing (m) : (Min 15910.449 - Max 49582.511)

Easting (m) : (Min 4847.297 - Max 55634.474)

Ellipsoidal Height (m) :



10

Recommended Procedure for RTK Heighting

- Recommended to perform 5 separate initializations and to acquire 3 readings in each, i.e. minimum of 15 reading in all, for each benchmark



11

Conclusions

- The SGeoid09 is suited in engineering applications which can accommodate ± 5 cm uncertainty in the height

END



12